

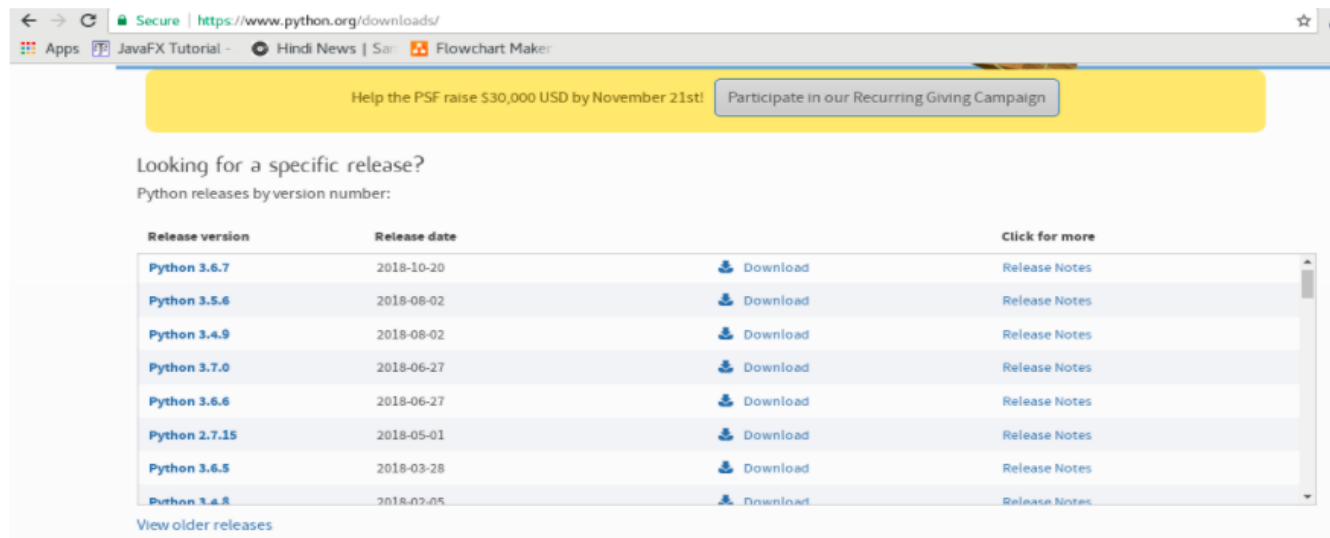
How to Install Python (Environment Set-up)

[< prev](#)[next >](#)

In this section of the tutorial, we will discuss the installation of Python on various operating systems.

Installation on Windows

Visit the link <https://www.python.org/downloads/> to download the latest release of Python. In this process, we will install Python 3.6.7 on our Windows operating system.



The screenshot shows the Python.org website's download page. At the top, there's a yellow banner with a fundraising goal. Below it, a section titled 'Looking for a specific release?' lists Python releases by version number. The table includes columns for 'Release version', 'Release date', 'Download' links, and 'Click for more' (Release Notes). The latest release, Python 3.6.7, is highlighted. Below the table is a link to 'View older releases'.

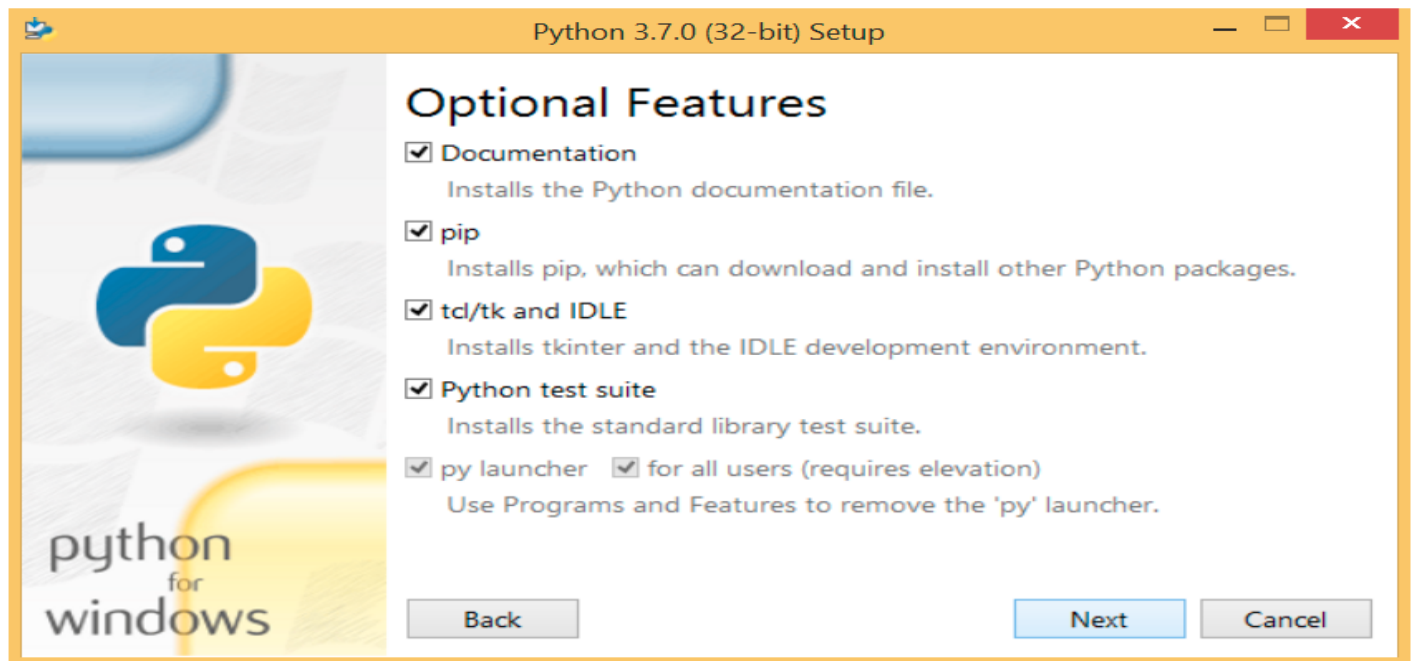
Release version	Release date	Download	Click for more
Python 3.6.7	2018-10-20	Download	Release Notes
Python 3.5.6	2018-08-02	Download	Release Notes
Python 3.4.9	2018-08-02	Download	Release Notes
Python 3.7.0	2018-06-27	Download	Release Notes
Python 3.6.6	2018-06-27	Download	Release Notes
Python 2.7.15	2018-05-01	Download	Release Notes
Python 3.6.5	2018-03-28	Download	Release Notes
Python 3.6.8	2018-02-05	Download	Release Notes

[View older releases](#)

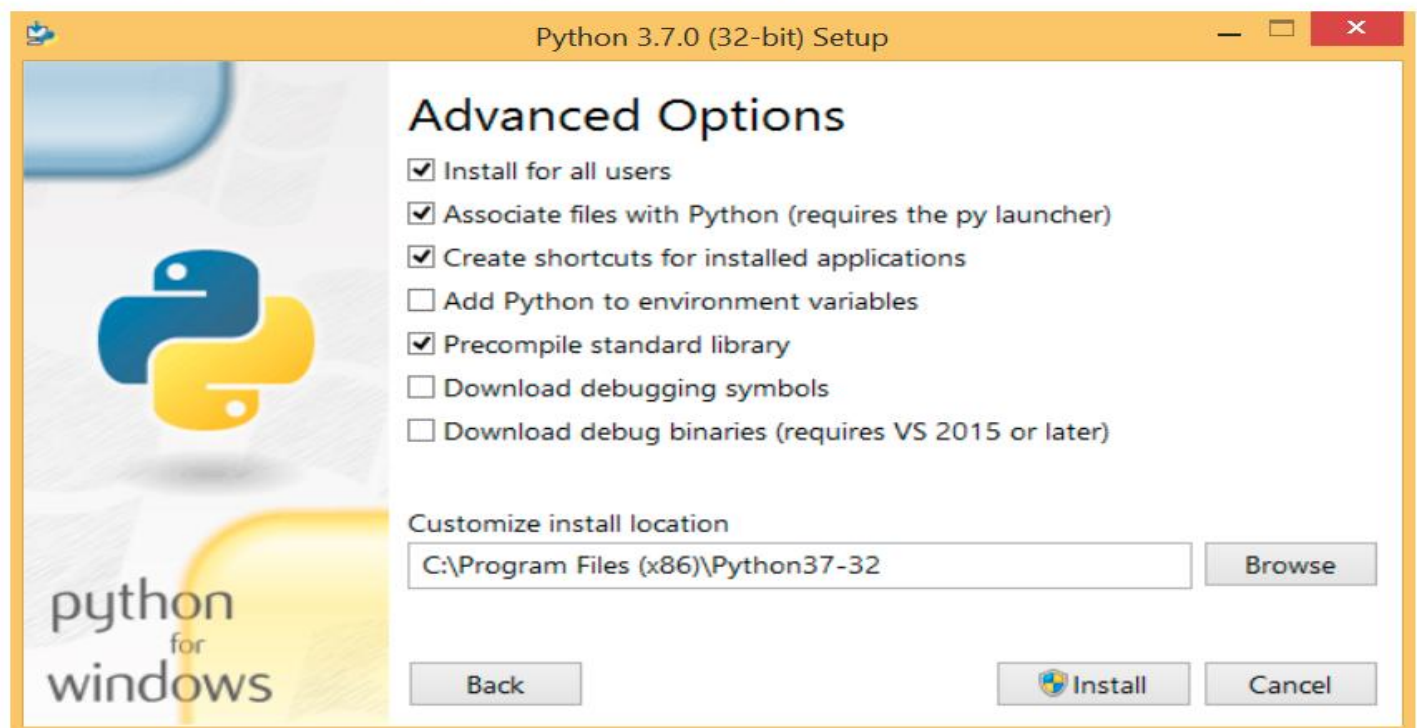
Double-click the executable file, which is downloaded; the following window will open. Select Customize installation and proceed.



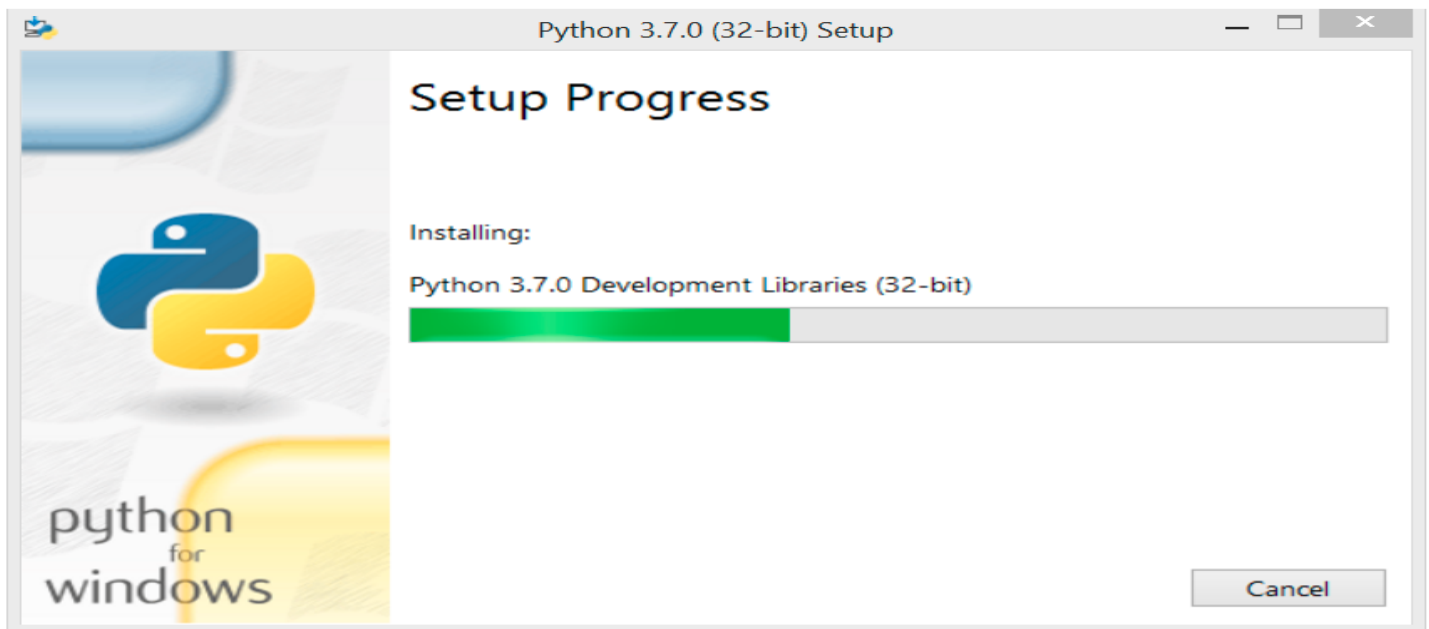
The following window shows all the optional features. All the features need to be installed and are checked by default; we need to click next to continue.



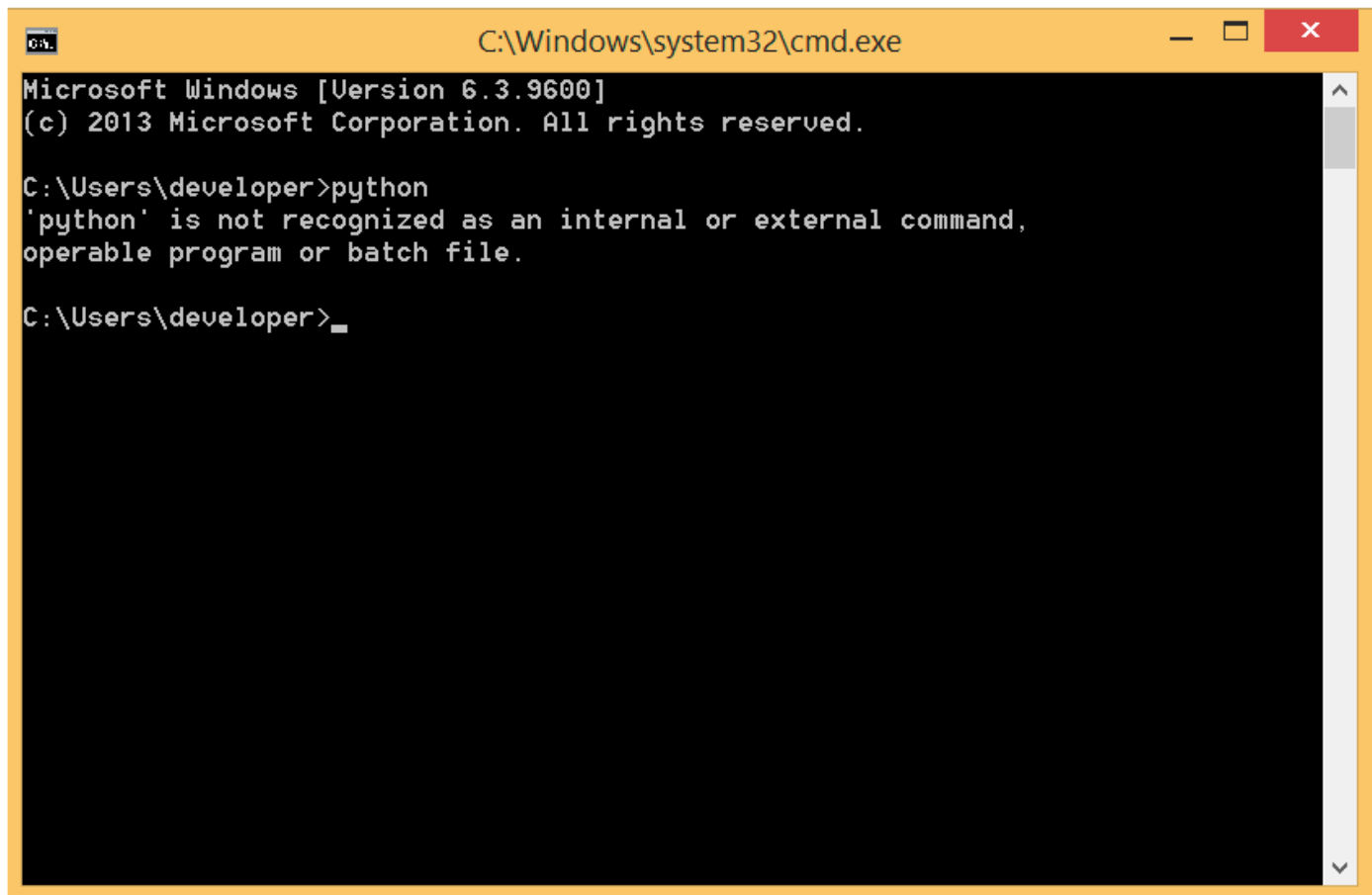
The following window shows a list of advanced options. Check all the options which you want to install and click next. Here, we must notice that the first check-box (install for all users) must be checked.



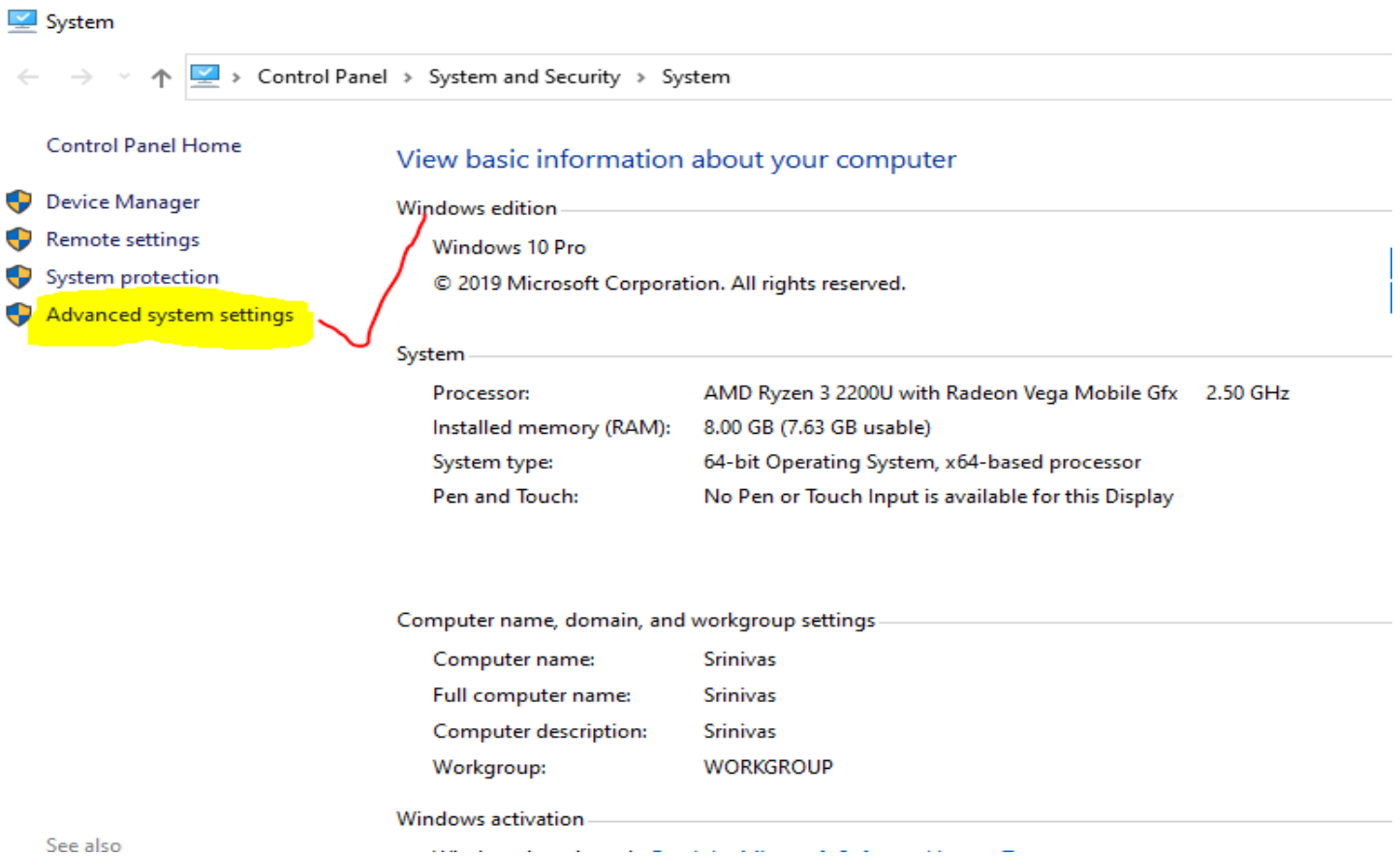
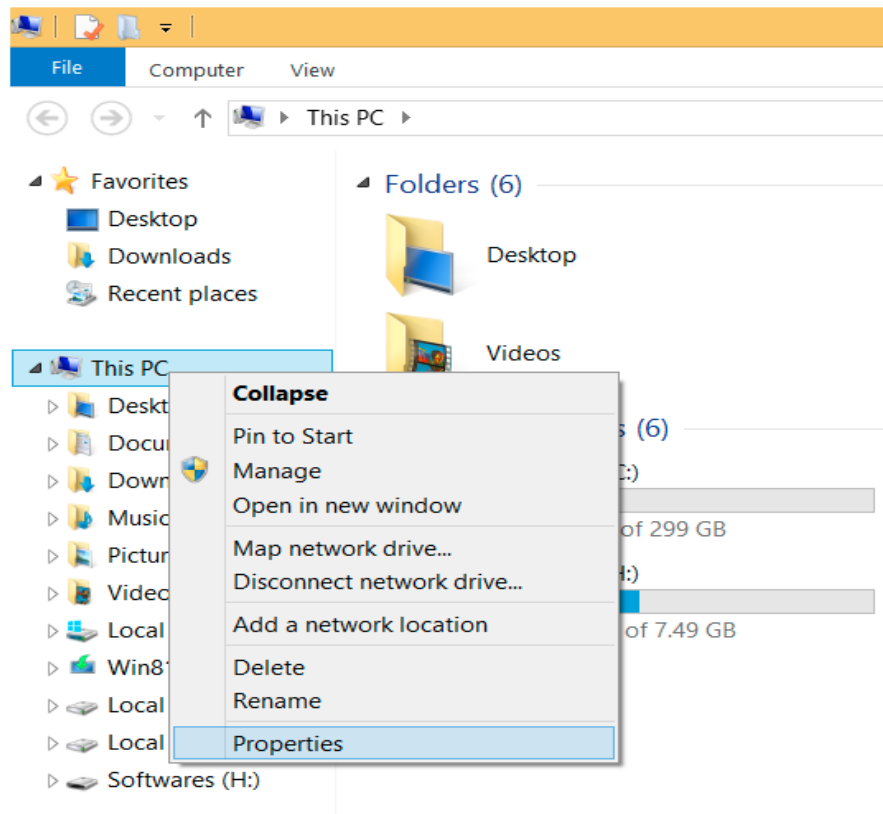
Now, we are ready to install python-3.6.7. Let's install it.

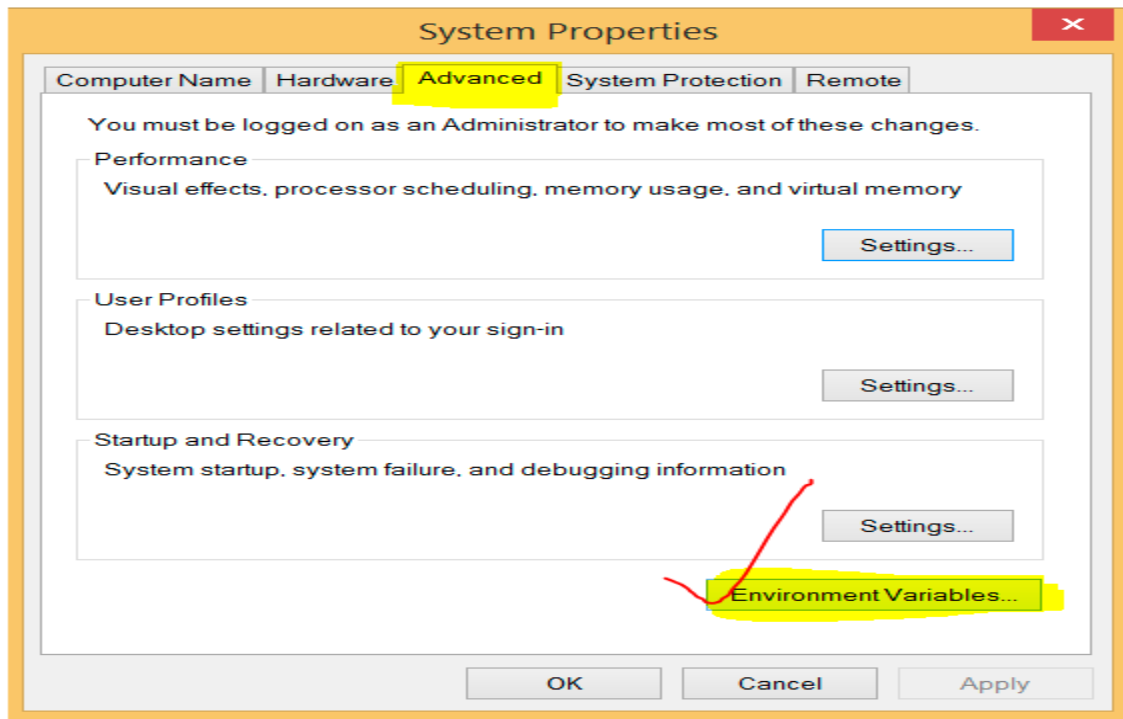


Now, try to run python on the command prompt. Type the command **python** in case of python2 or python3 in case of **python3**. It will show an error as given in the below image. It is because we haven't set the path.



To set the path of python, we need to right click on "my computer" and go to Properties → Advanced → Environment Variables.





Add the new path variable in the user variable section.

